

# ¿Cómo hacer accesibles los mapas históricos a la comunidad?

## Título

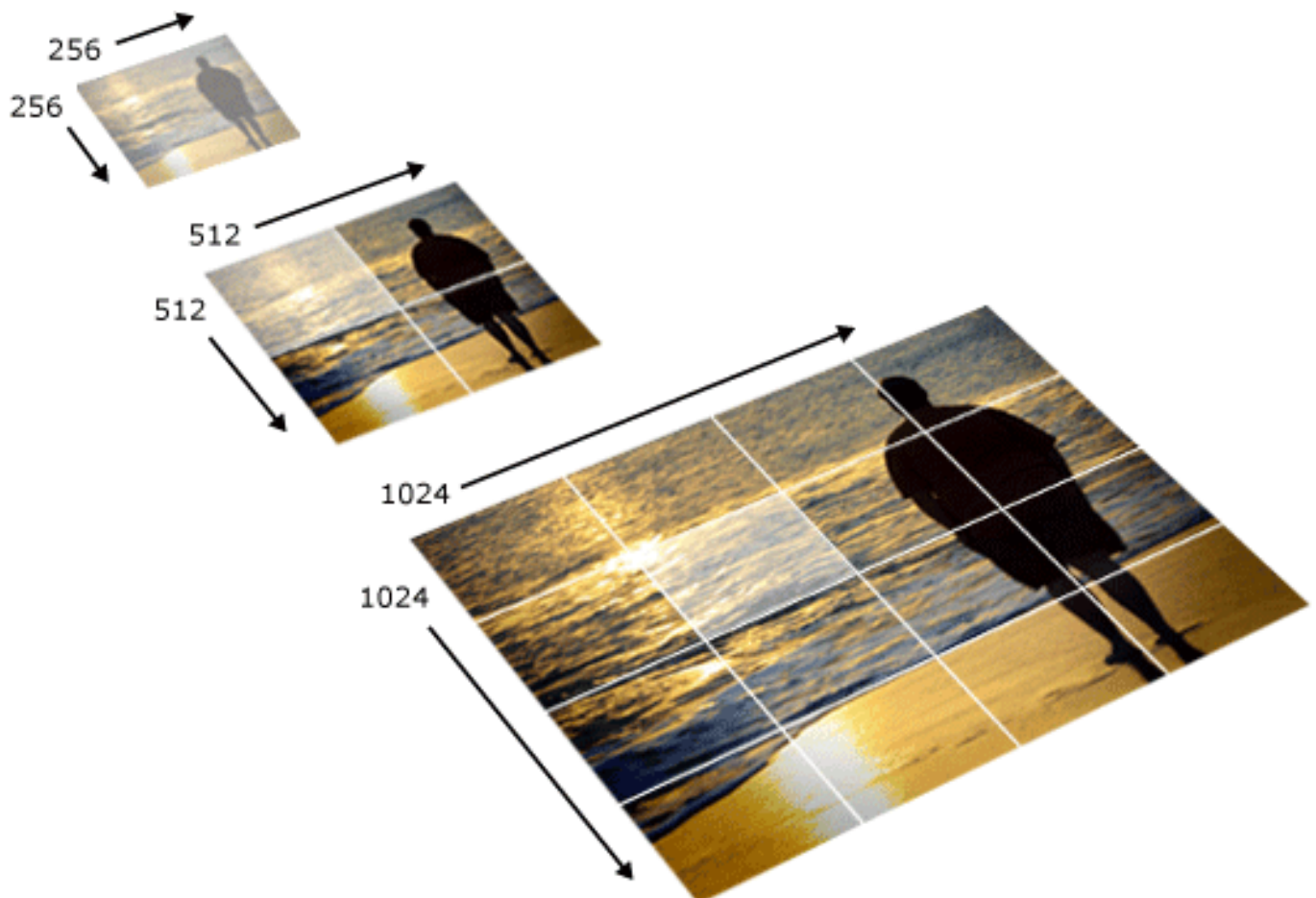
<http://piratepad.net/eafit2016>

### Como lo ha venido haciendo la biblioteca nacional

¿Y si no hemos podido rectificar aún, cómo compartir la imagen con otras personas?

1. Zoomify
2. Open Sea Dragon
  1. Formato especial Tiles<sup>1)</sup>

You have to provide the url to the Zoomify image folder and the with and height dimensions of the original image. You can also specify a display tolerance for the initial zoom level. A value lower than 1.0 might center the image and cut of the edges. The Zoomify tile format is similar to popular map tiling schemes, and I'm extending the Leaflet TileLayer class to show the image. The tiling follows a quadtree or pyramid pattern of increasing resolution, doubling the resolution for each zoom level. The tile size is 256 x 256 px and there are 256 tiles in each folder. The filename for each tile is z-x-y.jpg where z is the zoom level and x/y is the grid position starting from the top left corner.



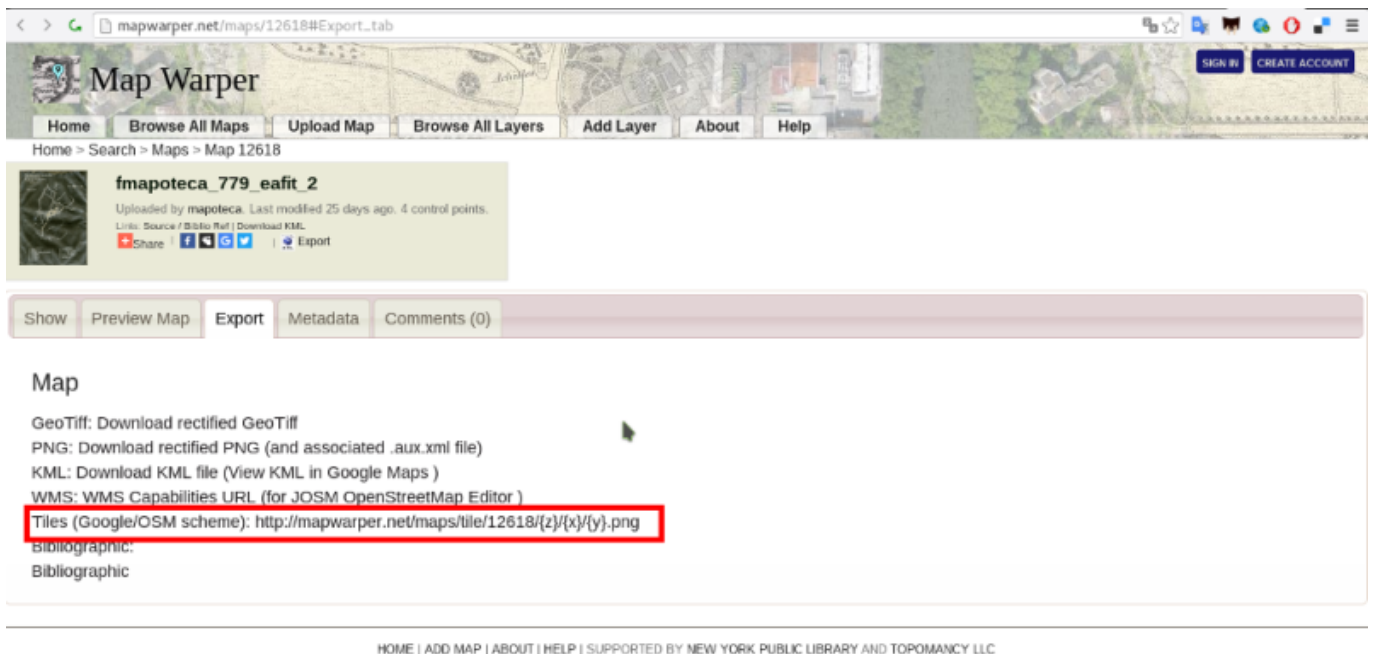
## Mapwarper

1. pestaña de export
  1. Geotiff
  2. PNG
  3. KML
  4. WMS
  5. Tiles

## Título

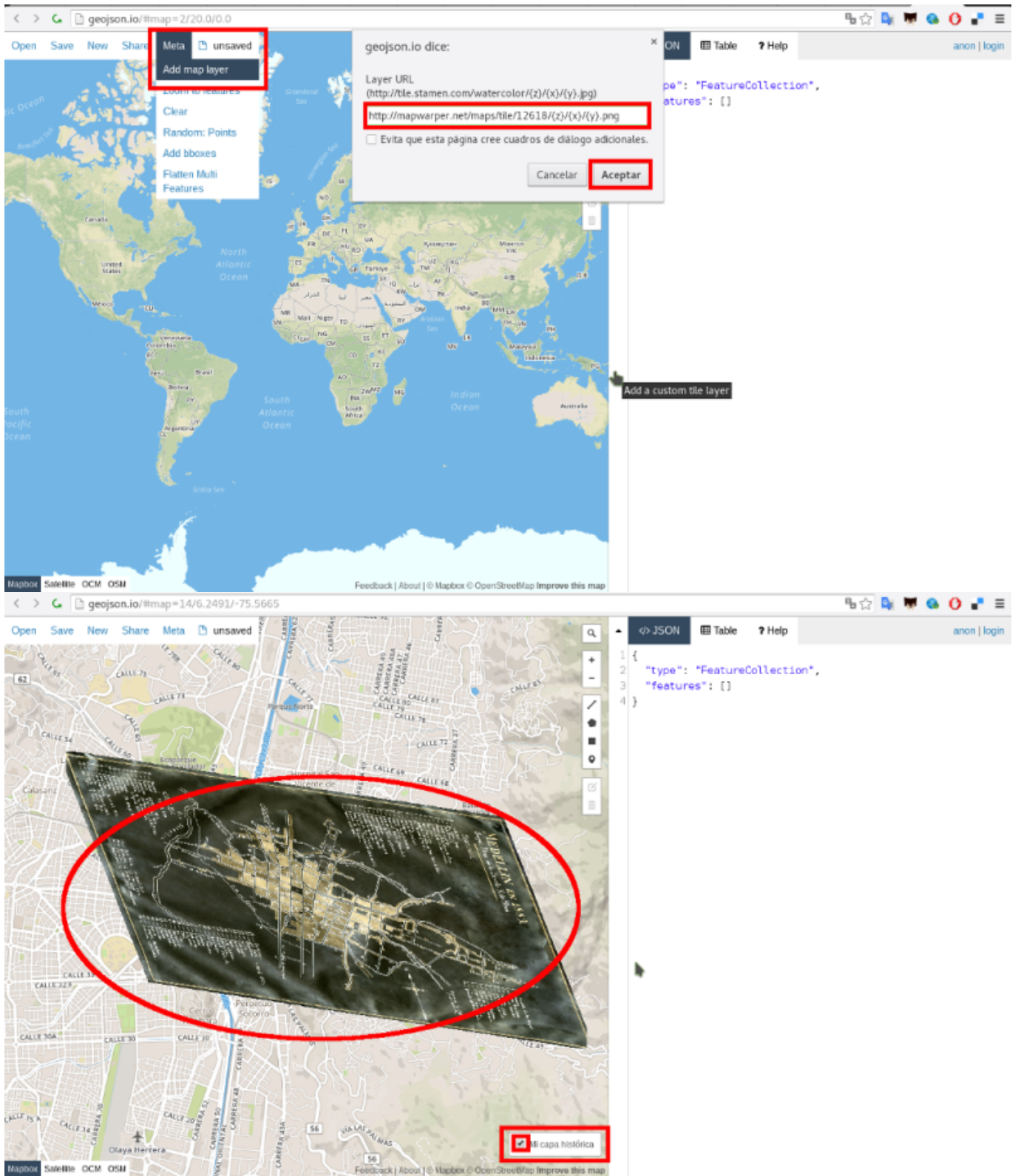
### Procedimiento:

- Toma el enlace Tiles de mapwarper



The screenshot shows the Map Warper website interface. At the top, there is a navigation bar with links for Home, Browse All Maps, Upload Map, Browse All Layers, Add Layer, About, and Help. Below this, there is a map preview area. The main content area shows the map title "fmapoteca\_779\_eafit\_2" and its metadata. Below the metadata, there is a tabbed interface with options for Show, Preview Map, Export, Metadata, and Comments (0). The Export tab is selected, and it displays the following options: GeoTiff: Download rectified GeoTiff, PNG: Download rectified PNG (and associated .aux.xml file), KML: Download KML file (View KML in Google Maps), WMS: WMS Capabilities URL (for JOSM OpenStreetMap Editor), and Tiles (Google/OSM scheme): <http://mapwarper.net/maps/tile/12618/{z}/{x}/{y}.png>. The URL is highlighted with a red box. Below the URL, there is a Bibliographic section.

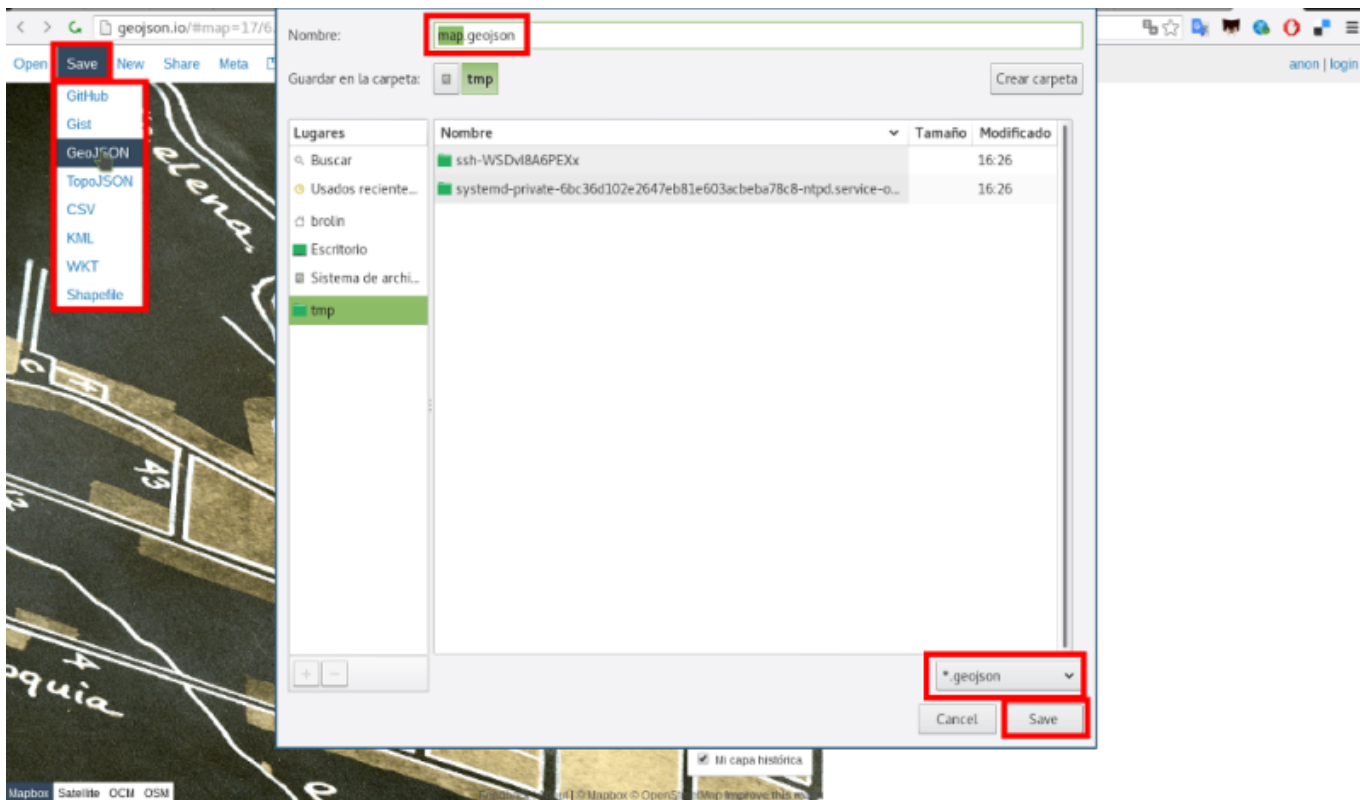
- Lo carga en geojson.io



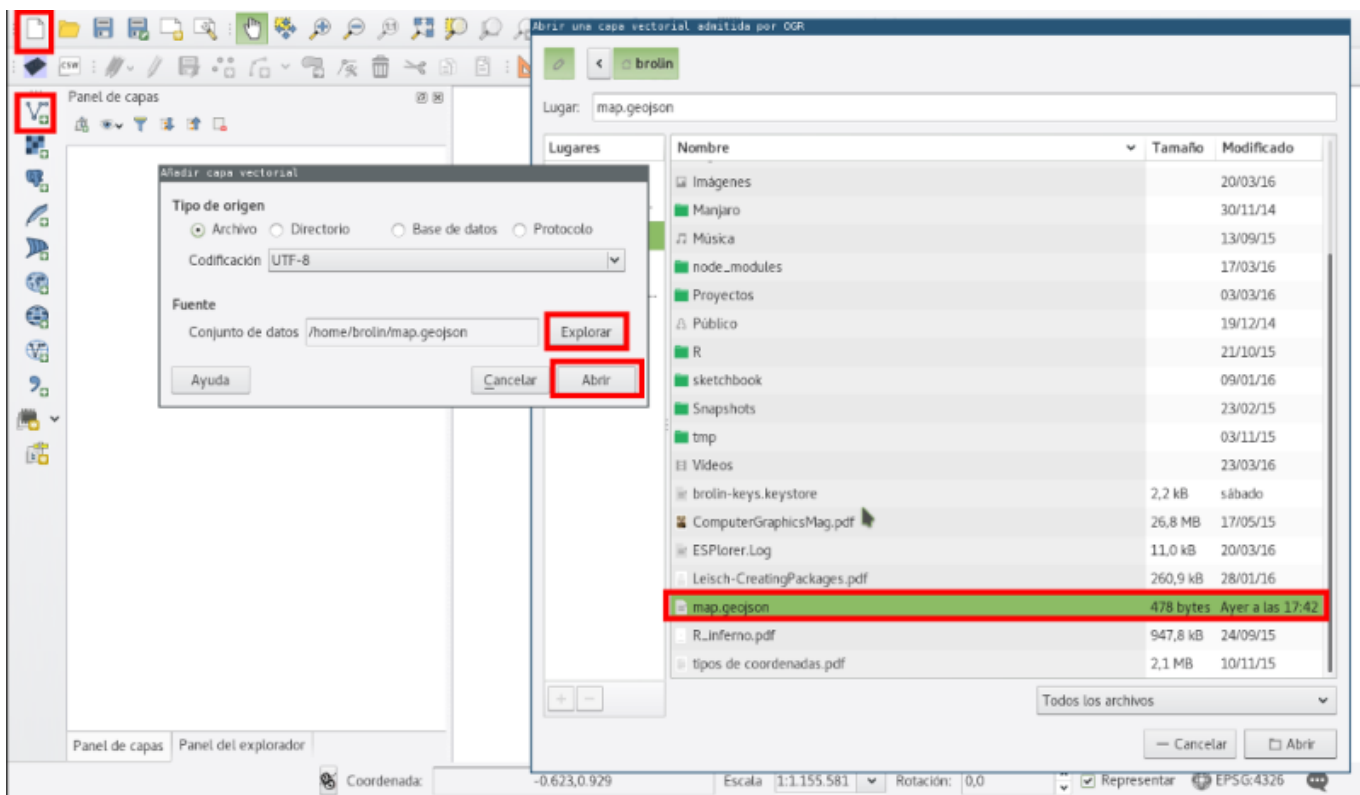
- Se marcan varios puntos en geojson.io



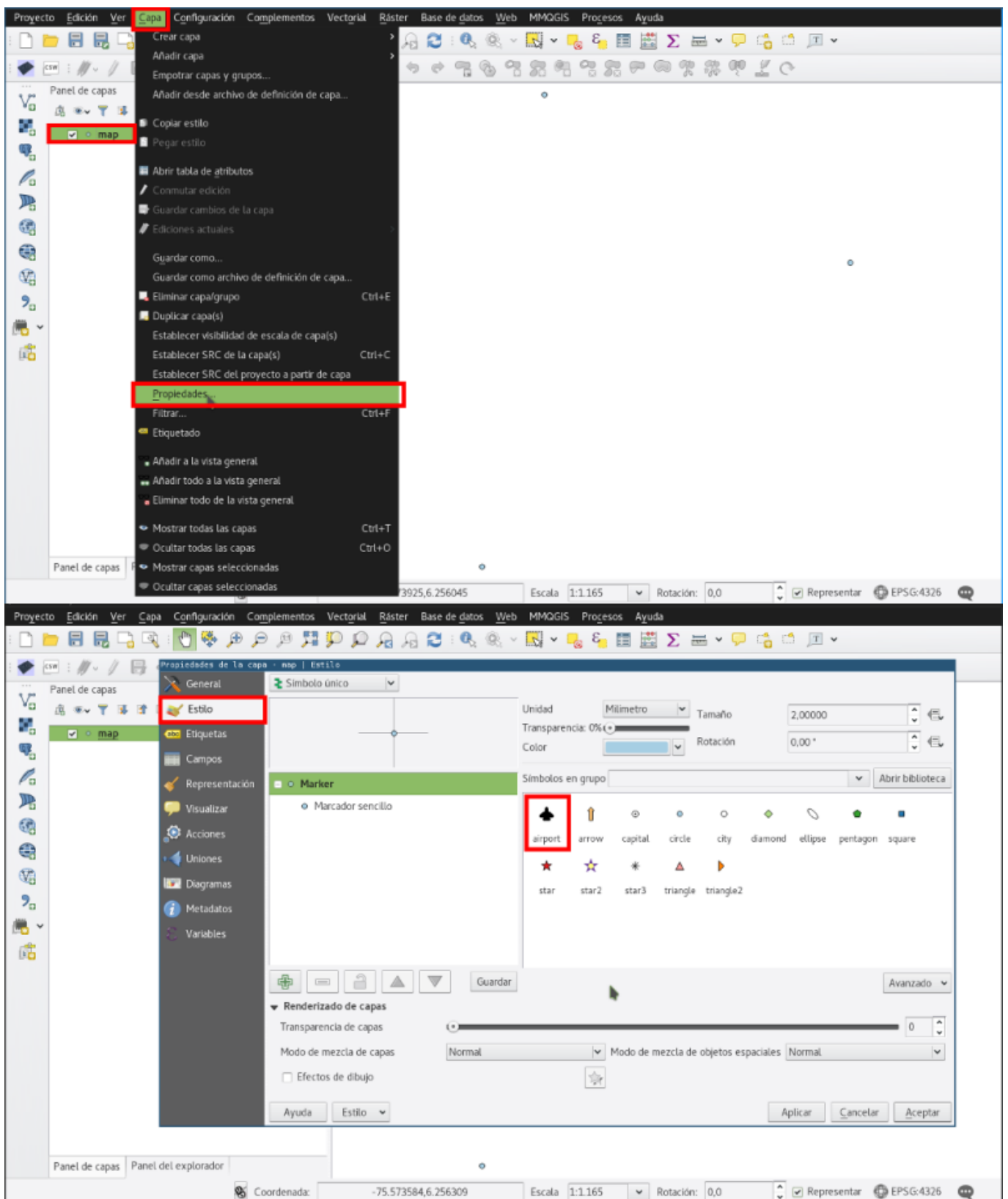
- Se descarga la información de geojson.io



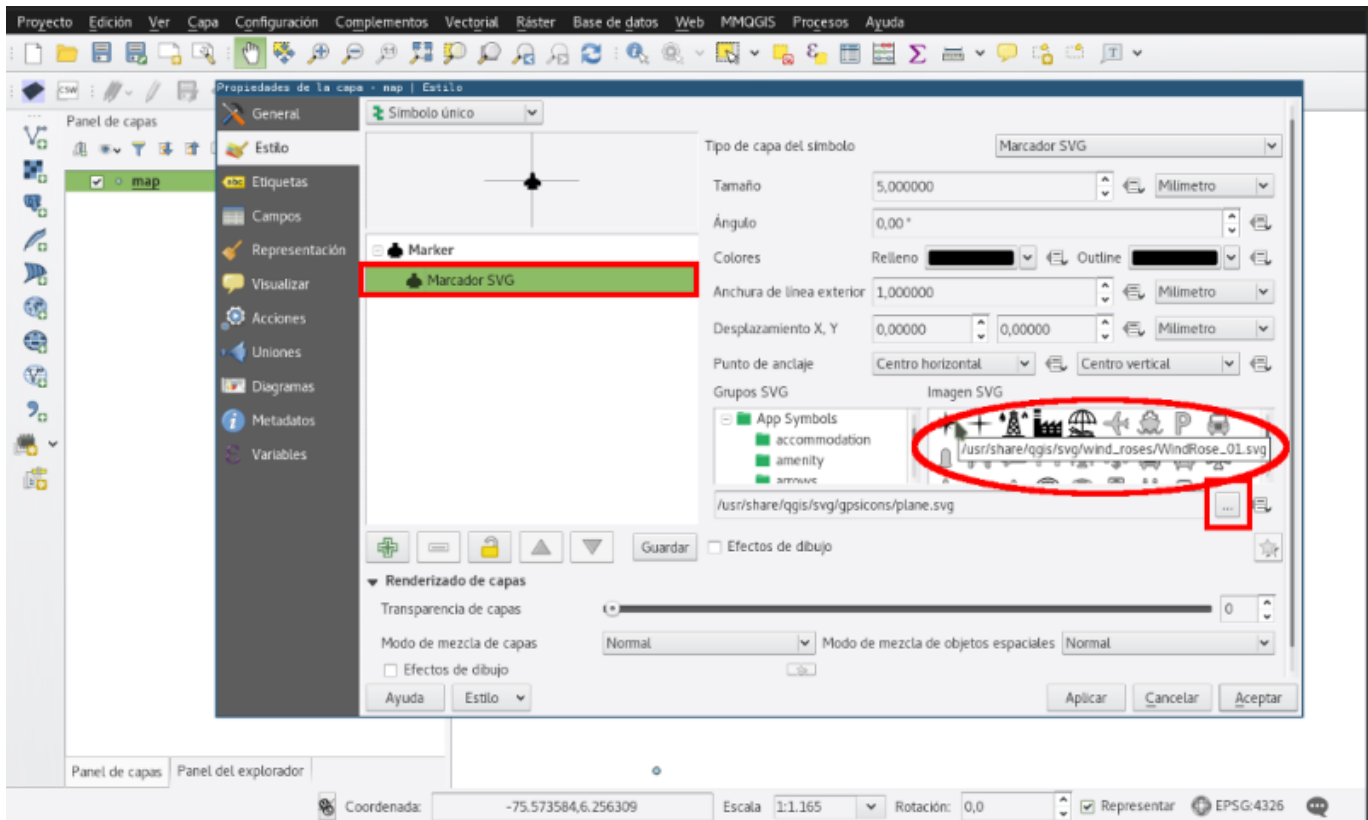
- Se abre qgis y se carga en qgis los datos bajados de geojson.io



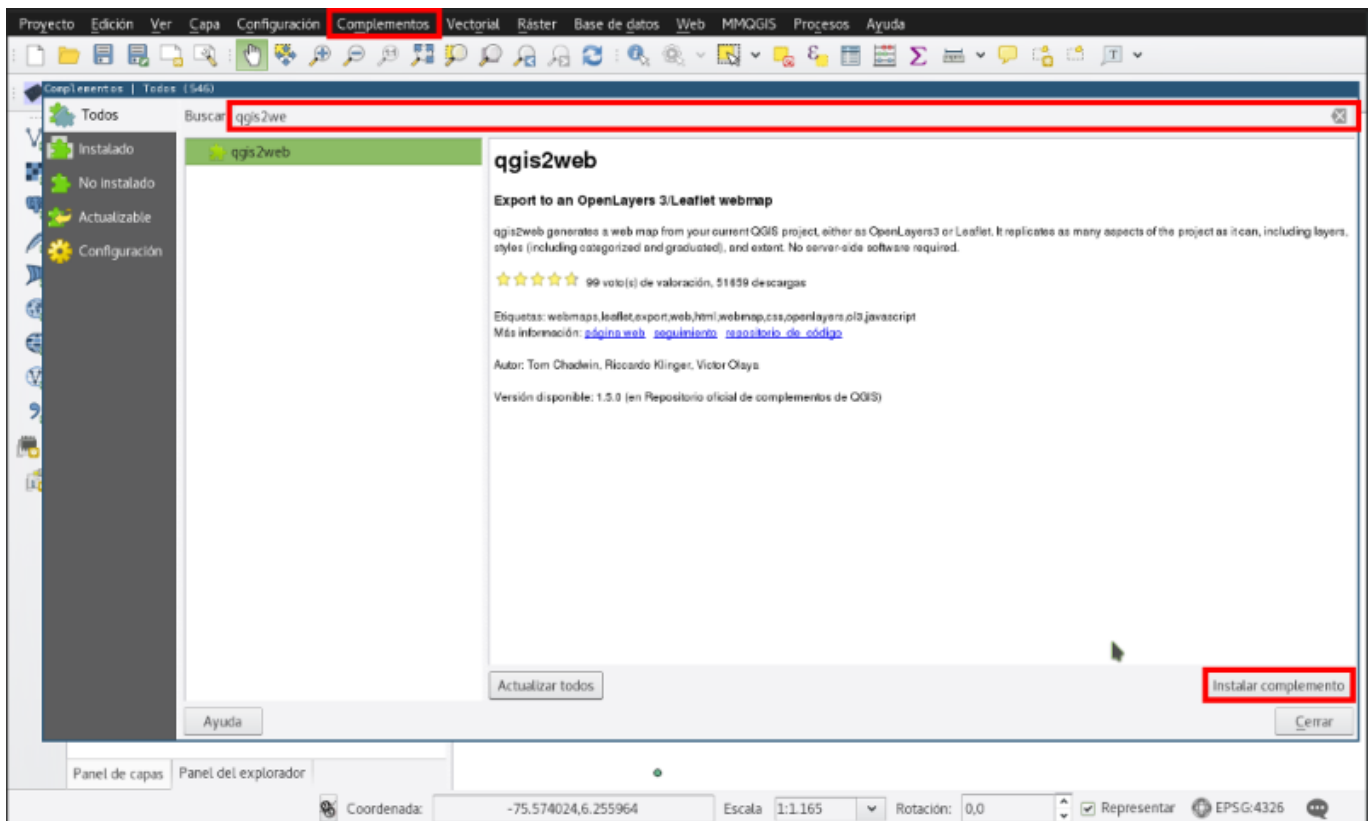
- Se ajustan las propiedades, como los íconos para cada imagen

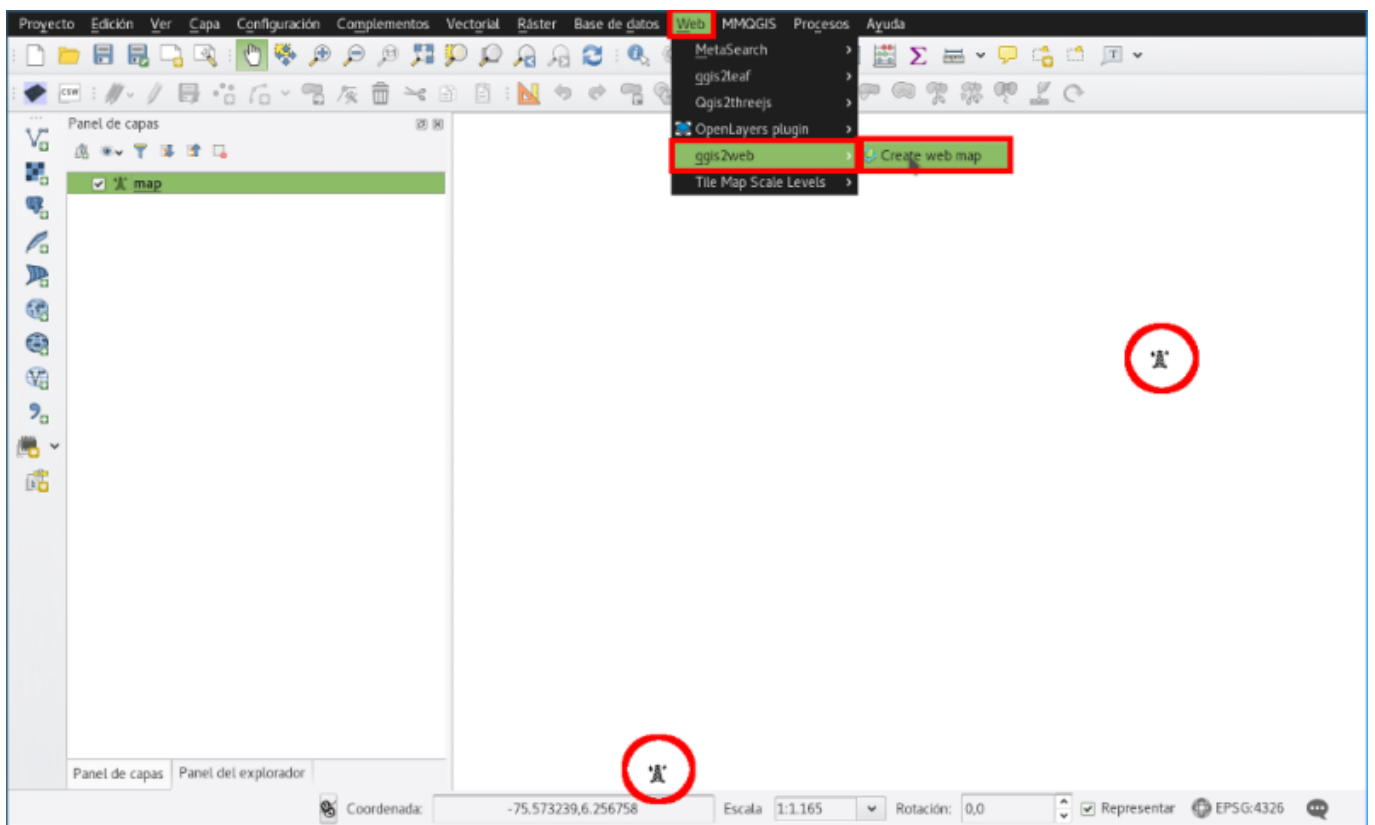


- ¿Cómo cargar íconos?

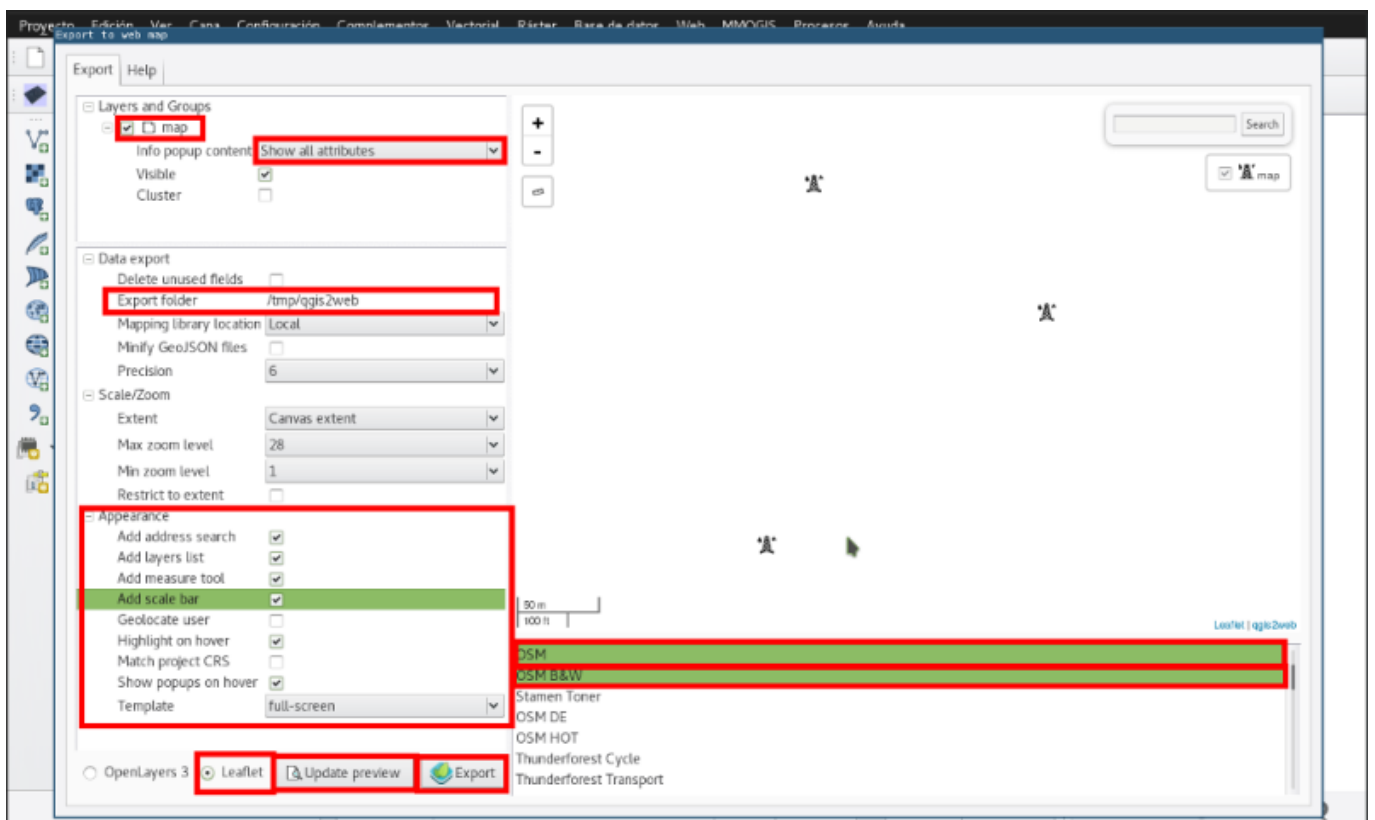


- Se instala en qgis el complemento qgis2web





- Se exporta un .html con qgis2web usando dos mapas base





```
var hash = new L.Hash(map);
map.attributionControl.addAttribution('<a href="https://github.com/tomchadein/qgis2web" target="_blank">qgis2web</a>');
var feature_group = new L.FeatureGroup([]);
var bounds_group = new L.FeatureGroup([]);
var raster_group = new L.LayerGroup([]);
var basemap0 = L.tileLayer('http://{s}.tile.openstreetmap.org/{z}/{x}/{y}.png', {
  attribution: '©copy; <a href="http://openstreetmap.org">OpenStreetMap</a> contributors,<a href="http://creativecommons.org/licenses/by-sa/2.0/">CC-BY-SA</a>',
  maxZoom: 28
});
basemap0.addTo(map);

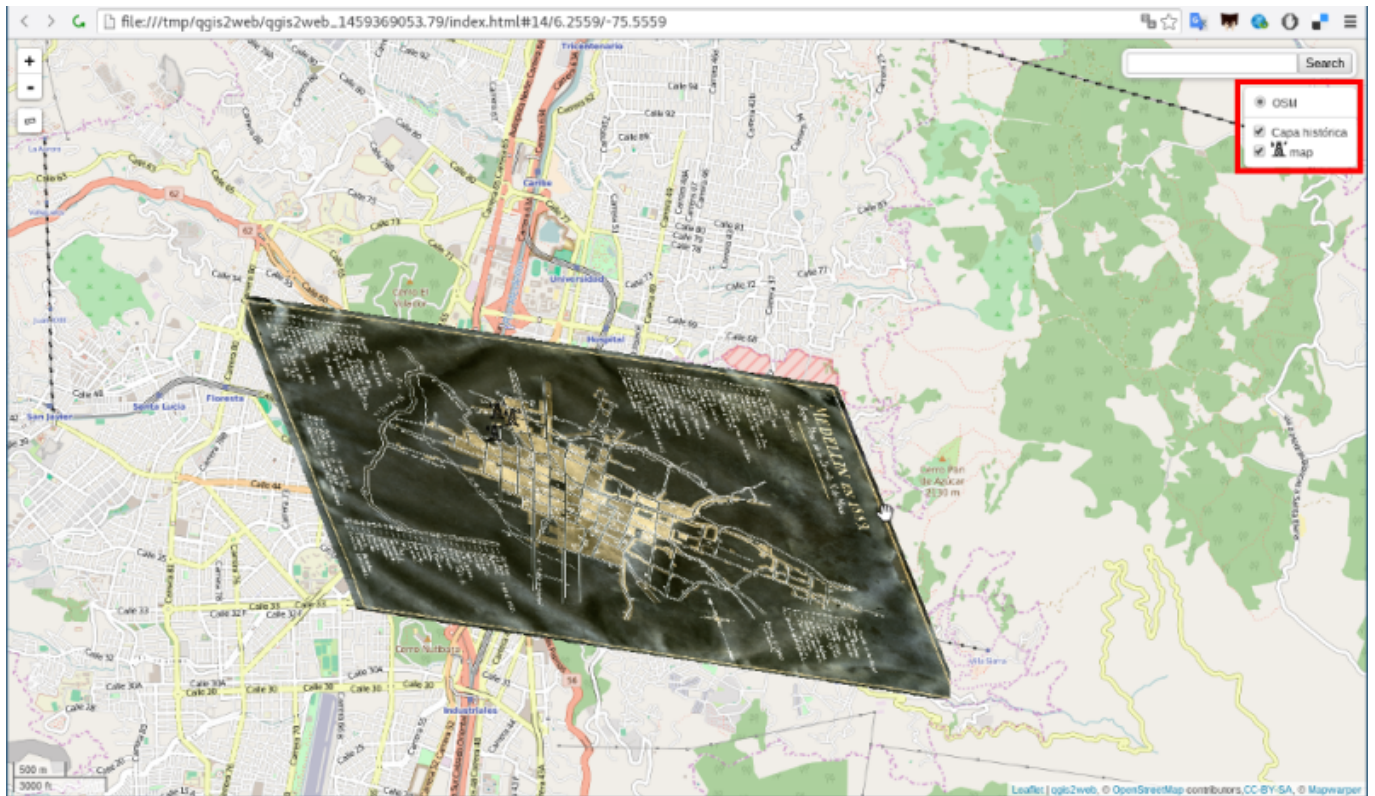
var basemap1 = L.tileLayer('http://mapwarper.net/maps/tile/12633/{z}/{x}/{y}.png', {
  attribution: '©copy; <a href="http://mapwarper.net/maps/12633">Mapwarper</a>',
  maxZoom: 28
});
basemap1.addTo(map);

var layerOrder = new Array();
function stackLayers() {
  for (index = 0; index < layerOrder.length; index++) {
    map.removeLayer(layerOrder[index]);
    map.addLayer(layerOrder[index]);
  }
}
function restackLayers() {
  for (index = 0; index < layerOrder.length; index++) {
    layerOrder[index].bringToFront();
  }
}
layerControl = L.control.layers([], [], {collapsed: false});
function pop_map0(feature, layer) {
  layer.on({
    mouseout: function(e) {
      layer.setStyle(doStylemap0(feature));
    }
  });
}
iconSize: [19, 19], // size of the icon
});

function doStylemap0() {
  return {
    icon: svgnmap0
  }
}
function doPointToLayermap0(feature, latlng) {
  return L.marker(latlng, doStylemap0())
}
var json_map0JSON = new L.geoJson(json_map0, {
  onEachFeature: pop_map0,
  pointToLayer: doPointToLayermap0
});
layerOrder[layerOrder.length] = json_map0JSON;

bounds_group.addLayer(json_map0JSON);
feature_group.addLayer(json_map0JSON);
raster_group.addTo(map);
feature_group.addTo(map);
var osmGeocoder = new L.Control.OSMGeocoder({
  collapsed: false,
  position: 'topright',
  text: 'Search',
});
osmGeocoder.addTo(map);
var baseMaps = ['OSM', basemap0];
L.control.layers(baseMaps, {' map': json_map0JSON, 'Copa histórica': basemap1}, {collapsed: false}).addTo(map);
stackLayers();
map.on('overlayadd', restackLayers);
</script>
</body>
```

- Así se debería ver el sitio web final



1)

<http://blog.thematicmapping.org/2013/06/showing-zoomify-images-with-leaflet.html>

From:  
<https://wiki.unloquer.org/> -

Permanent link:  
[https://wiki.unloquer.org/personas/brolin/capacitacion\\_sig/eafit\\_2016?rev=1459371322](https://wiki.unloquer.org/personas/brolin/capacitacion_sig/eafit_2016?rev=1459371322)

Last update: **2016/04/04 04:01**

