

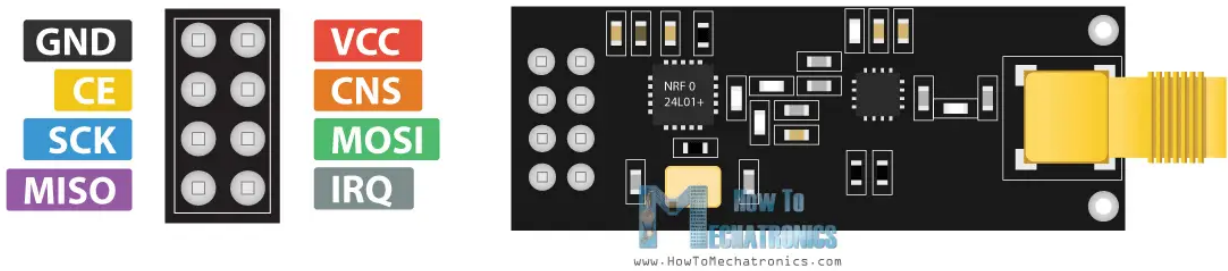
BlueJammer

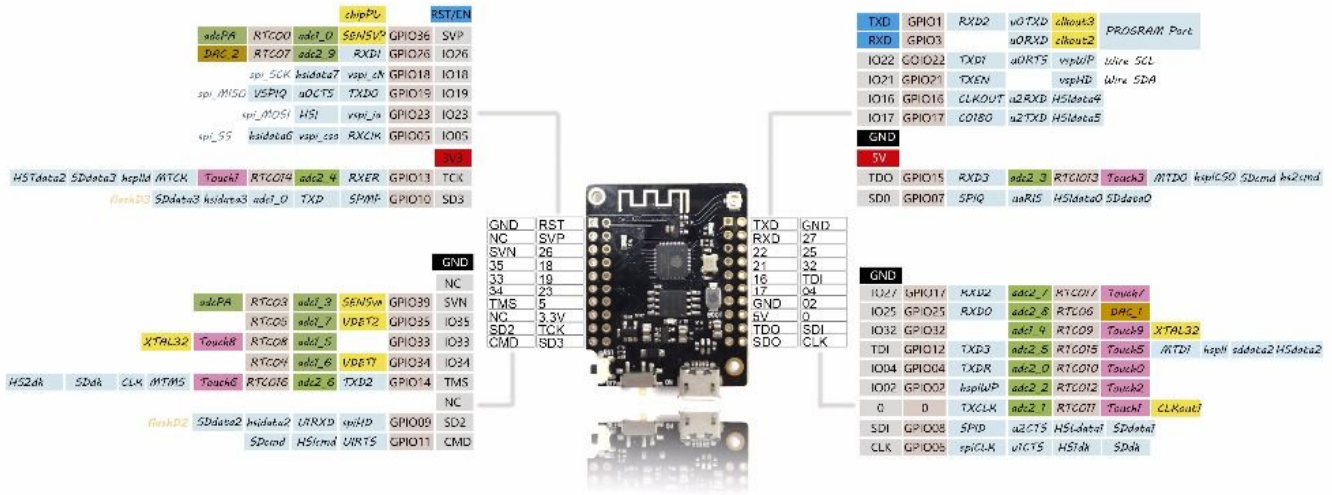
- <https://github.com/EmenstaNougat/ESP32-BlueJammer> → solo binarios
- <https://github.com/cifertech/RF-Clown> → código

NRF24L01 Pinout



NRF24L01+ PA/LNA Pinout





WiFi + Bluetooth Board
4MB Flash MINI 32 v2.0

<p>Power ESP32 VCC range: 2.2V-3.6V VBAT: direct to battery (and charger) USB: direct to USB (5V) VCC: Output of regulator 3.3V/600mA Up to 250mA during RF transmissions</p> <p>Wireless Wifi: 802.11 b/g/n/e/i WPA/WPA2/WPA2-Enterprise/SPS Bluetooth: Bluetooth 4.2/BLE</p>	<p>ESP32 Dual-core Xtensa 32-bit LX6 Up to 240MHz 520kB internal SRAM 4MB external flash</p> <p>Multiplexed I/Os allow up to</p> <ul style="list-style-type: none"> 18 ADC channels 3 SPI interfaces 3 UART interfaces 2 I2C interfaces 2 I2S interfaces 16 LED PWM outputs 2 DACs 10 Capacitive Touch Inputs 	<p>ADC Preamp</p> <p>GPIO pins 36, 37, 38, and 39 are able to be used as a low noise analog pre-amplifier</p> <p>Other* Hall Sensor Temp sensor (-40C to 125C) SD/SPIO/MMC Host Controller CAN Bus</p> <p><small>*On datasheet, but may not be supported yet</small></p>	<table border="1"> <tr><td>Name</td><td>ADC</td></tr> <tr><td>Power</td><td>DAC</td></tr> <tr><td>GND</td><td>SPI</td></tr> <tr><td>Control</td><td>UART</td></tr> <tr><td>Arduino</td><td>Touch</td></tr> <tr><td>GPIO</td><td>Misc</td></tr> </table> <p><small>*GPIO: Port Input Only *ADC: Pre-amplifier ADC GPIO 3.3V tolerant only</small></p>	Name	ADC	Power	DAC	GND	SPI	Control	UART	Arduino	Touch	GPIO	Misc
Name	ADC														
Power	DAC														
GND	SPI														
Control	UART														
Arduino	Touch														
GPIO	Misc														

Firmware upload

- Descarga binarios para bootloader, particiones y firmware de <https://github.com/EmenstaNougat/ESP32-Bluejammer/archive/refs/tags/ESP32-Bluejammer-v2.zip> dentro de la carpeta Firmware_Files están los archivos
- El instalador web no funcionó (<https://esp32-bluejammerflasher.pages.dev/>)
- Se sube el firmware usando esptool

```

└─λ # Upload with bootloader and partitions (if you have separate files)
    esptool --chip esp32 --port /dev/ttyUSB0 --baud 921600 \
      --before default_reset --after hard_reset \
      write_flash 0x1000 bootloader.bin \
      0x8000 partitions.bin \
      0x10000 firmware.bin
  
```

El firmware una vez cargado de manera exitosa arranca pero presenta errores al momento de leer los chips nRF24

ESP32-BLUEJAMMER

Firmware : Combo-Channel-Select (BT-BLE-WiFi-RC)

BY EME NSTA

!Educational purposes only!

<https://github.com/EmenstaNougat/ESP32-BlueJammer>

I'm not responsible for your actions!

VSPI - FAILED

!!! SP (standard power) start failure! VSPI nRF24 module could NOT be initialized! #####

HSPI - FAILED

!!! HP (high power) start failure! HSPI nRF24 module could NOT be initialized! #####
State 1: Bluetooth

From:
<https://wiki.unloquer.org/> -

Permanent link:
<https://wiki.unloquer.org/personas/brolin/proyectos/hardwarehacking/bluejammer?rev=1757264654>

Last update: 2025/09/07 17:04

