

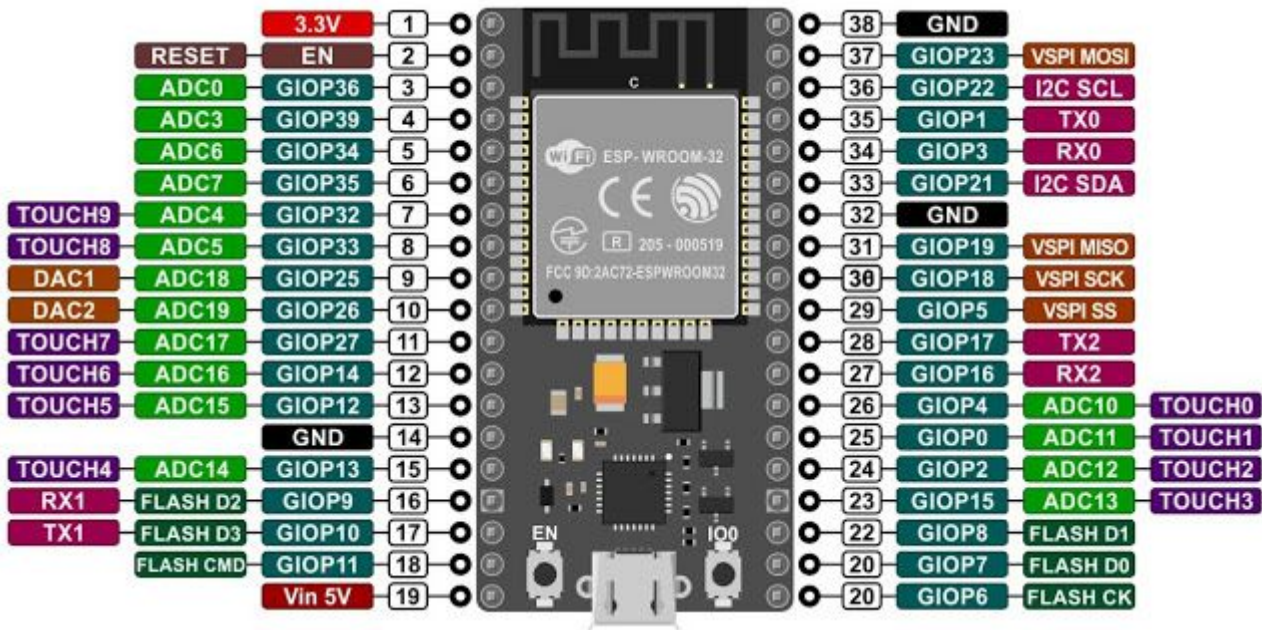
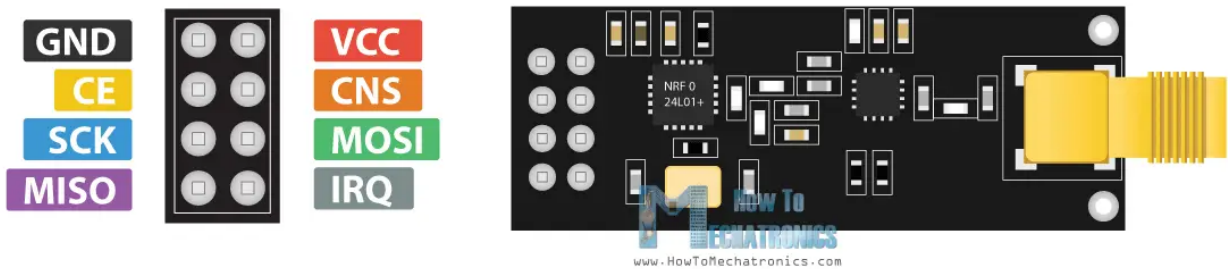
BlueJammer

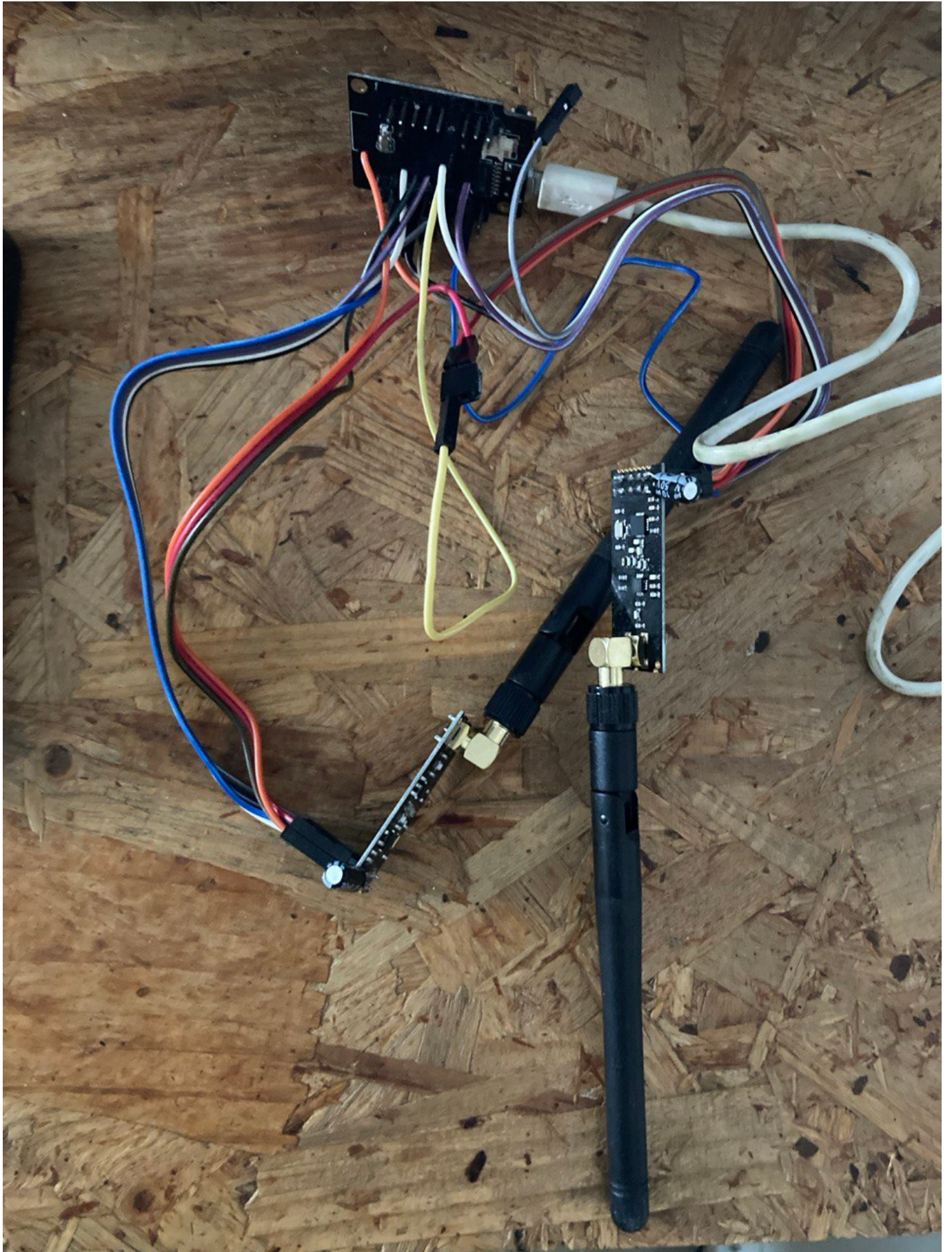
- <https://github.com/EmenstaNougat/ESP32-BlueJammer> → solo binarios
- <https://github.com/cifertech/RF-Clown> → código

NRF24L01 Pinout



NRF24L01+ PA/LNA Pinout





Firmware upload

- Descarga binarios para bootloader, particiones y firmware de <https://github.com/EmenstaNougat/ESP32-BlueJammer/archive/refs/tags/ESP32-BlueJammer-v2.zip> dentro de la carpeta Firmware_Files están los archivos
- El instalador web no funcionó (<https://esp32-bluejammerflasher.pages.dev/>)
- Se sube el firmware usando esptool

```
↳λ # Upload with bootloader and partitions (if you have separate files)
    esptool --chip esp32 --port /dev/ttyUSB0 --baud 921600 \
      --before default_reset --after hard_reset \
      write_flash 0x1000 bootloader.bin \
      0x8000 partitions.bin \
      0x10000 firmware.bin
```

El firmware una vez cargado de manera exitosa arranca pero presenta errores al momento de leer los chips nRF24

```

#####
ESP32-BLUEJAMMER
#####

Firmware : Combo-Channel-Select (BT-BLE-WiFi-RC)

BY EME NSTA

#####

!Educational purposes only!

https://github.com/EmenstaNougat/ESP32-BlueJammer

I'm not responsible for your actions!

#####

VSPI - FAILED

!!! SP (standard power) start failure! VSPI nRF24 module could NOT be initialized! #####

#####

HSPI - FAILED

!!! HP (high power) start failure! HSPI nRF24 module could NOT be initialized! #####
State 1: Bluetooth

```

Referentes

- <https://lastminuteengineers.com/nrf24l01-arduino-wireless-communication/>
- <https://grabcad.com/library/nrf24l01-pa-lna-1>
- <https://github.com/Steffen-W/Import-LIB-KiCad-Plugin#use-of-the-application>

From: <https://wiki.unloquer.org/> -

Permanent link: <https://wiki.unloquer.org/personas/brolin/proyectos/hardwarehacking/bluejammer?rev=1761067519>

Last update: 2025/10/21 17:25

