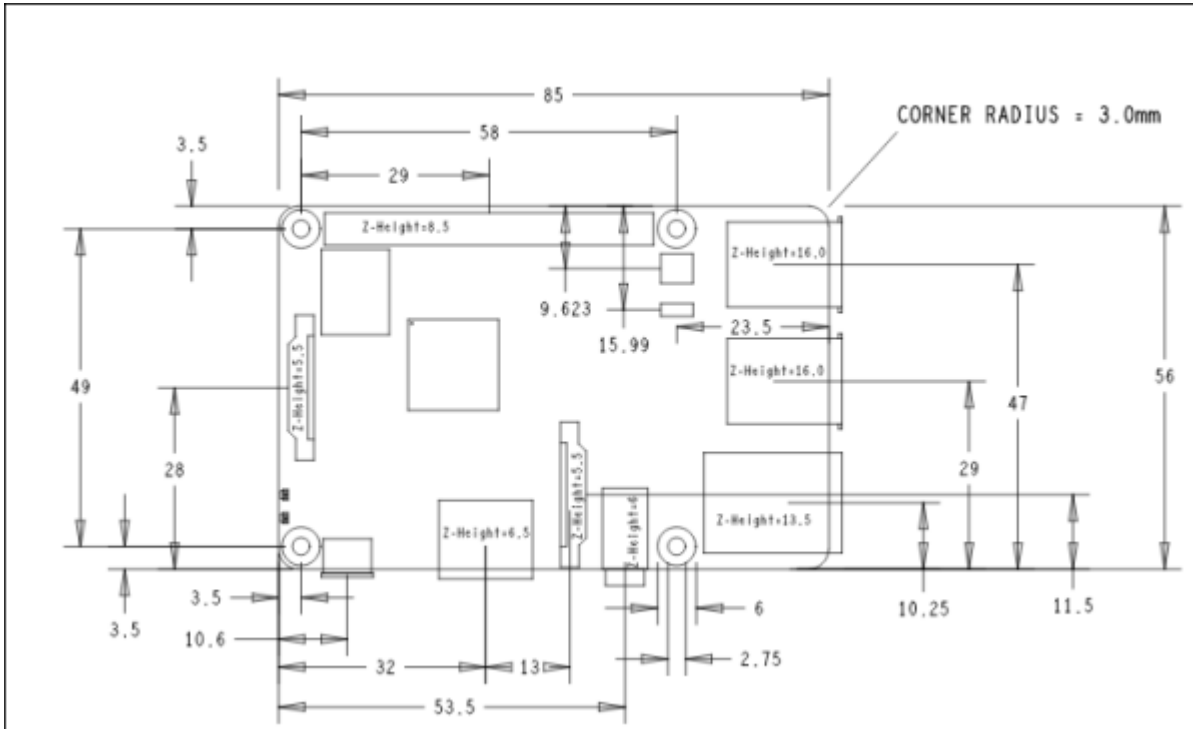


Gateway RAK831

Shield para conexión a Raspberry y GPS

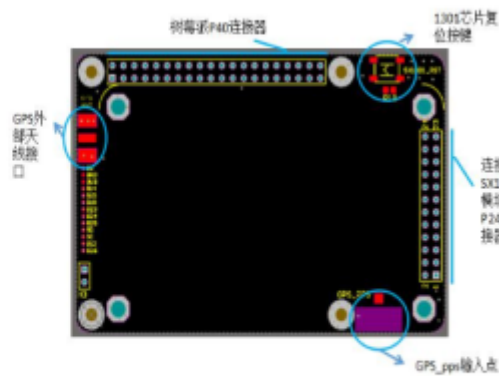
Medidas de raspberry pi 3 b+

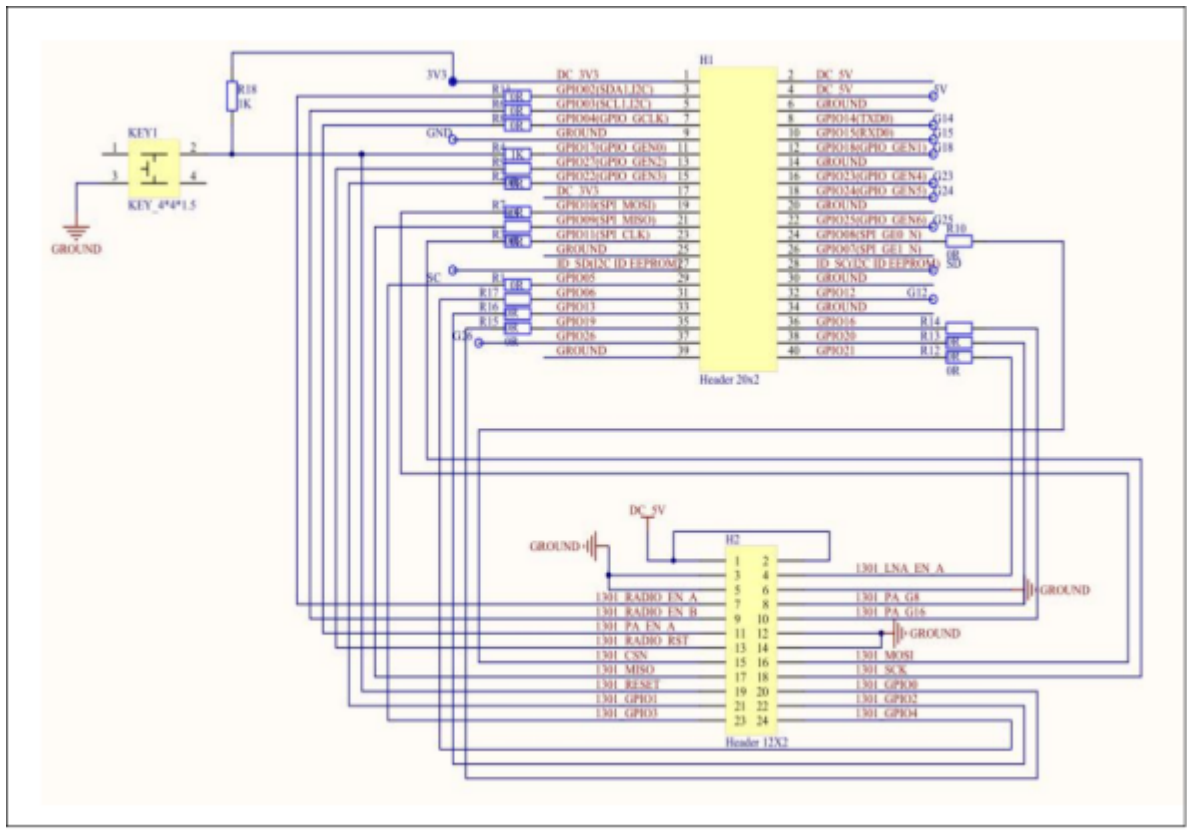


1、SX1301 模块管脚和树莓派管脚对照表

树莓派管脚列表		树莓派 ADPin 引脚对照表		SX1301 管脚列表	
引脚名称	BOARD PIN	引脚名称	BOARD PIN	引脚名称	DC, SW
3.3V	1	3.3V	1	PS1V2	DC, SW
GPIO 0	2	GPIO 0	2	GPIO 0	
GPIO 1	3	GPIO 1	3	GPIO 1	
GPIO 2	4	GPIO 2	4	GPIO 2	
GPIO 3	5	GPIO 3	5	GPIO 3	
GPIO 4	6	GPIO 4	6	GPIO 4	
GPIO 5	7	GPIO 5	7	GPIO 5	
GPIO 6	8	GPIO 6	8	GPIO 6	
GPIO 7	9	GPIO 7	9	GPIO 7	
GPIO 8	10	GPIO 8	10	GPIO 8	
GPIO 9	11	GPIO 9	11	GPIO 9	
GPIO 10	12	GPIO 10	12	GPIO 10	
GPIO 11	13	GPIO 11	13	GPIO 11	
GPIO 12	14	GPIO 12	14	GPIO 12	
GPIO 13	15	GPIO 13	15	GPIO 13	
GPIO 14	16	GPIO 14	16	GPIO 14	
GPIO 15	17	GPIO 15	17	GPIO 15	
GPIO 16	18	GPIO 16	18	GPIO 16	
GPIO 17	19	GPIO 17	19	GPIO 17	
GPIO 18	20	GPIO 18	20	GPIO 18	
GPIO 19	21	GPIO 19	21	GPIO 19	
GPIO 20	22	GPIO 20	22	GPIO 20	
GPIO 21	23	GPIO 21	23	GPIO 21	
GPIO 22	24	GPIO 22	24	GPIO 22	
GPIO 23	25	GPIO 23	25	GPIO 23	
GPIO 24	26	GPIO 24	26	GPIO 24	
GPIO 25	27	GPIO 25	27	GPIO 25	
GPIO 26	28	GPIO 26	28	GPIO 26	
GPIO 27	29	GPIO 27	29	GPIO 27	
GPIO 28	30	GPIO 28	30	GPIO 28	
GPIO 29	31	GPIO 29	31	GPIO 29	
GPIO 30	32	GPIO 30	32	GPIO 30	
GPIO 31	33	GPIO 31	33	GPIO 31	
GPIO 32	34	GPIO 32	34	GPIO 32	
GPIO 33	35	GPIO 33	35	GPIO 33	
GPIO 34	36	GPIO 34	36	GPIO 34	
GPIO 35	37	GPIO 35	37	GPIO 35	
GPIO 36	38	GPIO 36	38	GPIO 36	
GPIO 37	39	GPIO 37	39	GPIO 37	
GPIO 38	40	GPIO 38	40	GPIO 38	

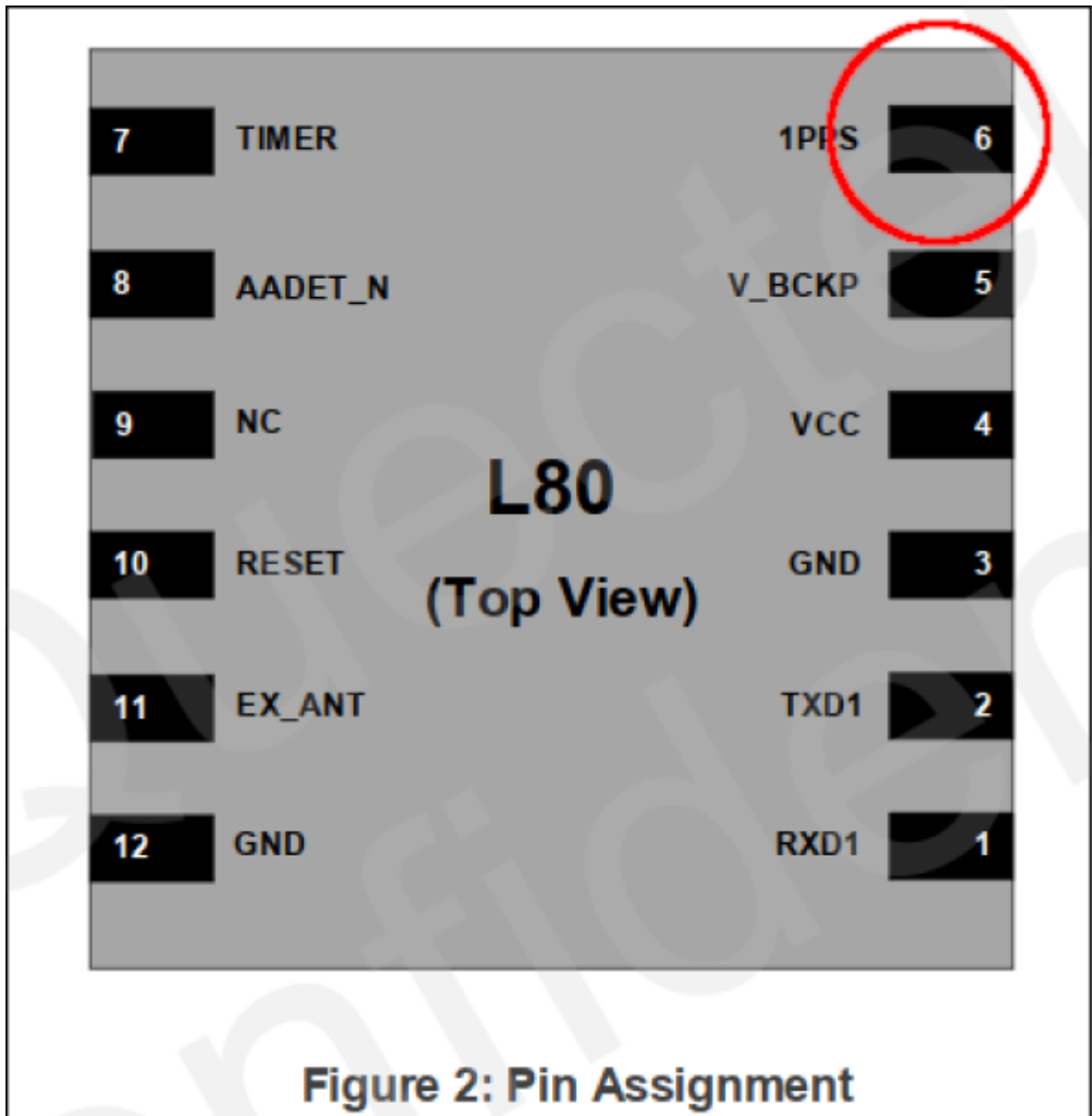
2、管脚对应位置







Pin PPS Quectel I80





Converter Board (Raspberry)

With Max-7Q GPS Module and GPS Antenna

- <https://hackaday.io/project/20482-designing-a-raspberry-pi-hat>

RAK 831 Pin	Description on silk screen	RPi physical pin
1	+5V	2
3	GND	6
19	RST (Resent pin)	22
18	SCK (SPI Clock)	23
17	MISO	21
16	MOSI	19
15	CSN (Chip Select)	24

Conexión a la raspberry pi

rpi v3 to rak 831 pin connection

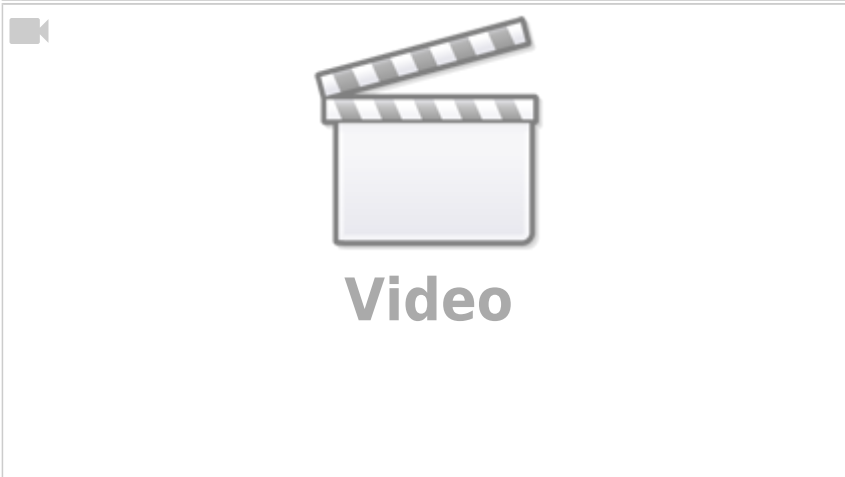
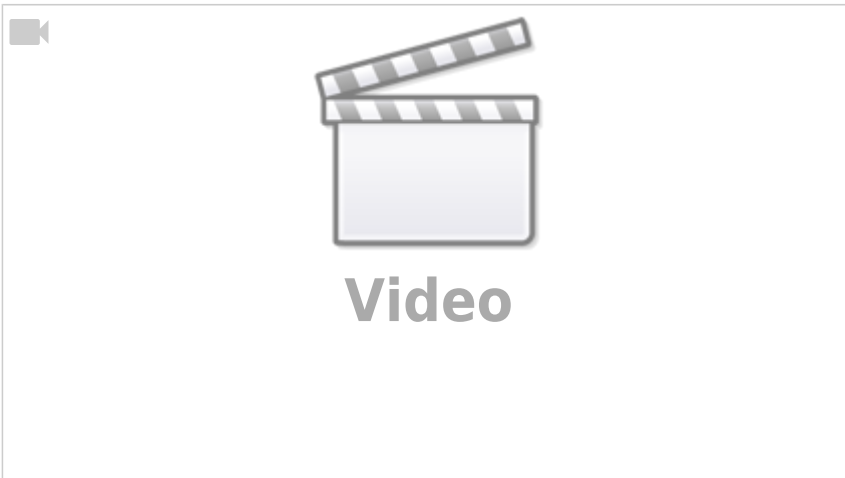
- <http://docs.rakwireless.com/cn/LoRa/RAK831-LoRa-Gateway/B应用笔记/转接板接线说明.pdf>
- <https://github.com/IRNAS/RPi-HAT-RAK831-PoE>
- **Antena** → <https://github.com/IRNAS/ttn-irnas-gw>

Referentes

- <https://github.com/RAKWireless/RAK2245-RAK831-LoRaGateway-RPi-Raspbian-OS>
- <https://www.thethingsnetwork.org/forum/t/the-hard-rak831-cafe-part-1/8464>
- <https://github.com/Edzef/RAK831-LoRa-gateway/blob/master/LoRa%20gateway%20with%20Orange%20Pi%20and%20RAK831.pdf>
- https://github.com/xesscorp/RPi_Hat_Template
- [http://docs.rakwireless.com/en/LoRa/RAK831-LoRa-Gateway/Hardware-Specification/Raspberry%](http://docs.rakwireless.com/en/LoRa/RAK831-LoRa-Gateway/Hardware-Specification/Raspberry%20Pi)

[20Pi%20Switchboard%20Schematic_20171218.pdf](#)

- https://www.quectel.com/UploadImage/Downlad/L80_Hardware_Design_V1.1.pdf



From: <https://wiki.unloquer.org/> -

Permanent link: https://wiki.unloquer.org/personas/brolin/proyectos/redes_lpwa/gateways/rak831?rev=1558117577

Last update: **2019/05/17 18:26**

